



LG Mobile unlock manual by Salami1_1

<http://www.UnlockLGOnline.com>

Estimated time: +/- 10 minutes

Samsung mobile unlock credits:

<http://www.UnlockSamsungOnline.com>

Unlock your LG mobile phone @ Home

What you need

- Stable internet connection (128k min upload en download recommended)
- A Windows computer (Win 98, Win ME, Win XP, Win 2000)
- KG800 or KG90 FTDI usb cable or a serial cable compatible with KG800 or KG90
- Our client software
- A valid login with minium 3 credits for the unlock client.

How to get the needed items

Internet and a computer you probably already have, else you wouldn't be reading this tutorial.

You can buy a cable at following sources:

<http://www.handy-style.de/index/cat196/2538>

<http://www.fonefunshop.co.uk/datacables/lg.htm#unlock>

And also at websites as:

Ebay.com and often also at your local gsm shop. Just make sure the cable is an FTDI usb cable

Our client can be downloaded from:

http://www.unlocklgonline.com/how_it_works.php

And you can order the instant credits (after payment they are delivered directly to your email!) at:

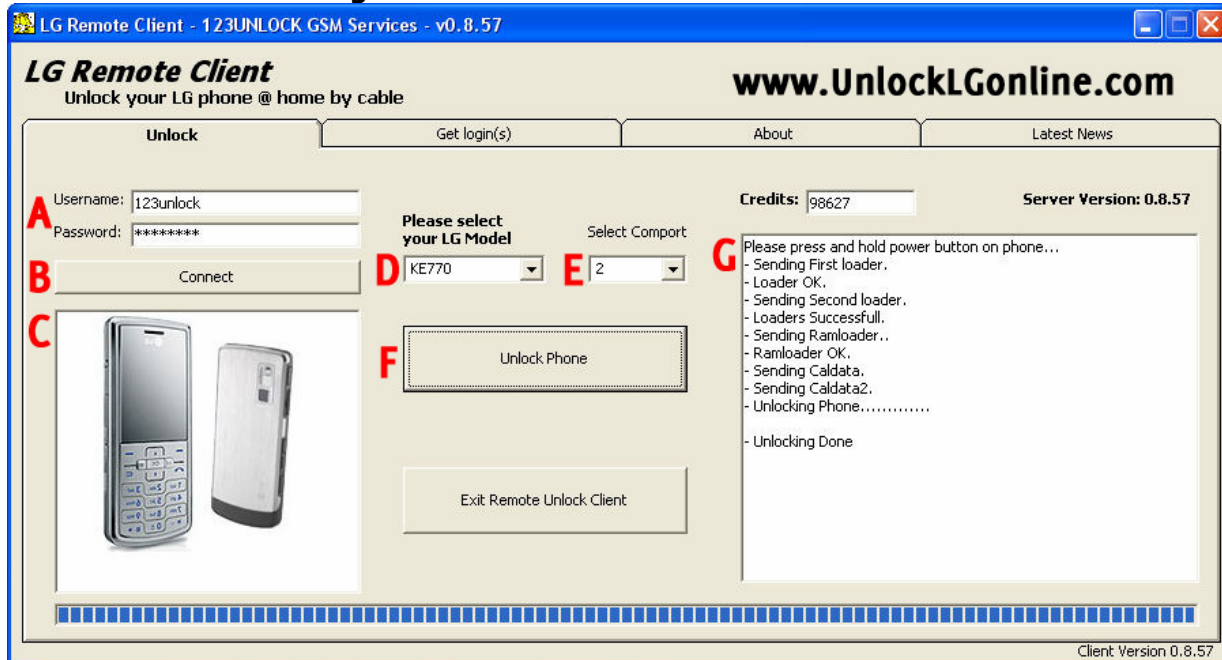
<http://www.unlocklgonline.com/>

Note; these parties have nothing to do with UnlockLGonline.com and are not the only sources where you can buy the cable.

Note 2; When you buy the cable ask your seller to deliver the cable with drivers! Usb cables need drivers and they can differ per cable.

Note 3; An FTDI cable is a cable which has a so called 'com port emulator' built in. This means the usb connection is treated like a 'serial cable' connection for the computer.

Now start the unlocking!



1. Download our client software if you already haven't done so
2. Unpack the software (don't run it from within the zip file, unpack it first!)
3. Install the drivers from your usb cable (if you are using serial cable skip this step)
4. Connect cable to your computer and your gsm (LG gsm must be OFF!)
5. Start our LG client software
6. Fill out your personal login which you ordered on our website at 'A'
7. Press the 'connect' button at 'B'
8. The client connects to our server, you will see result in the log screen at 'G'
9. Now select the model you want to unlock at 'D'
10. The picture of the LG model you selected will show up at 'C', so you can check if you selected the correct model.
11. Now select the comport number ('E') which your phone is connected too. If you don't, know pick a high number. If you haven't got it right the first time you can try all others it won't harm anything
12. After selecting the comport press the 'unlock Phone' ('F') button. In the log screen at 'G' you will read 'Please press and hold power button on phone...'. Do this for 3 – 5 seconds until it says:
 - '- Sending First loader.'
 - '- Loader OK.'Then you can let go of the power button. Now the unlock process will begin and within +/- 1 minute your phone will be unlocked.

---Your done!---

Extra: Credits for the LG unlock server are also valid for the Samsung unlock server and visa versa! (Samsung server; <http://www.UnlockSamsungOnline.com>)

TroubleShooting

- *I'm getting pcomm -1 error, phone not found*

- Your usb cable drivers aren't installed correctly. Install them again
- You are not using the correct cable. You must use an FTDI usb cable
- You have the wrong comport selected. Try another comport number.

To check if FTDI usb cable are installed correct do te following:

Go to 'Start' -> 'Control panel' -> 'System'

Click on the 'Hardware' tab then choose 'device manager'

go to modems.

You should see something like LG CDMA modem

go to 'Universal serial bus controllers

You should see something like LG USB Composite Device

To check on what comport your usb driver is on:

Go to 'modems' select the 'LG CDMA modem'. Right click it and select 'properties'.

Now go to the tab 'modem'. There you can see on which comport your LG is connected.

Other points to pay attention too if you have problems

- Make sure your phone is fully charged
- Can't select comport because can't select any port higher then 15.

If the comport your computer gave your usb conntection to your LG mobile phone is higher then 15 you have to change it.

Go to 'start'

go to 'settings'

start 'control panel'

go to 'system'

go to 'hardware' tab

Press 'device manager' button

go to 'Modems'

You should see something like the 'LG MODEM' there (if not then your drivers aren't installed ok)

Right click on it and choose 'properties'

Now go to 'Advanced' tab

Click the 'Advanced Port settings'

There you can change the com port number.

Now just reconnect your phone again (same usb port ofcourse!)

Your done.

If you can't find any answer in here please contact us in person.

Sales@UnlockLGonline.com